

MIDDLEFIELD VILLAGE

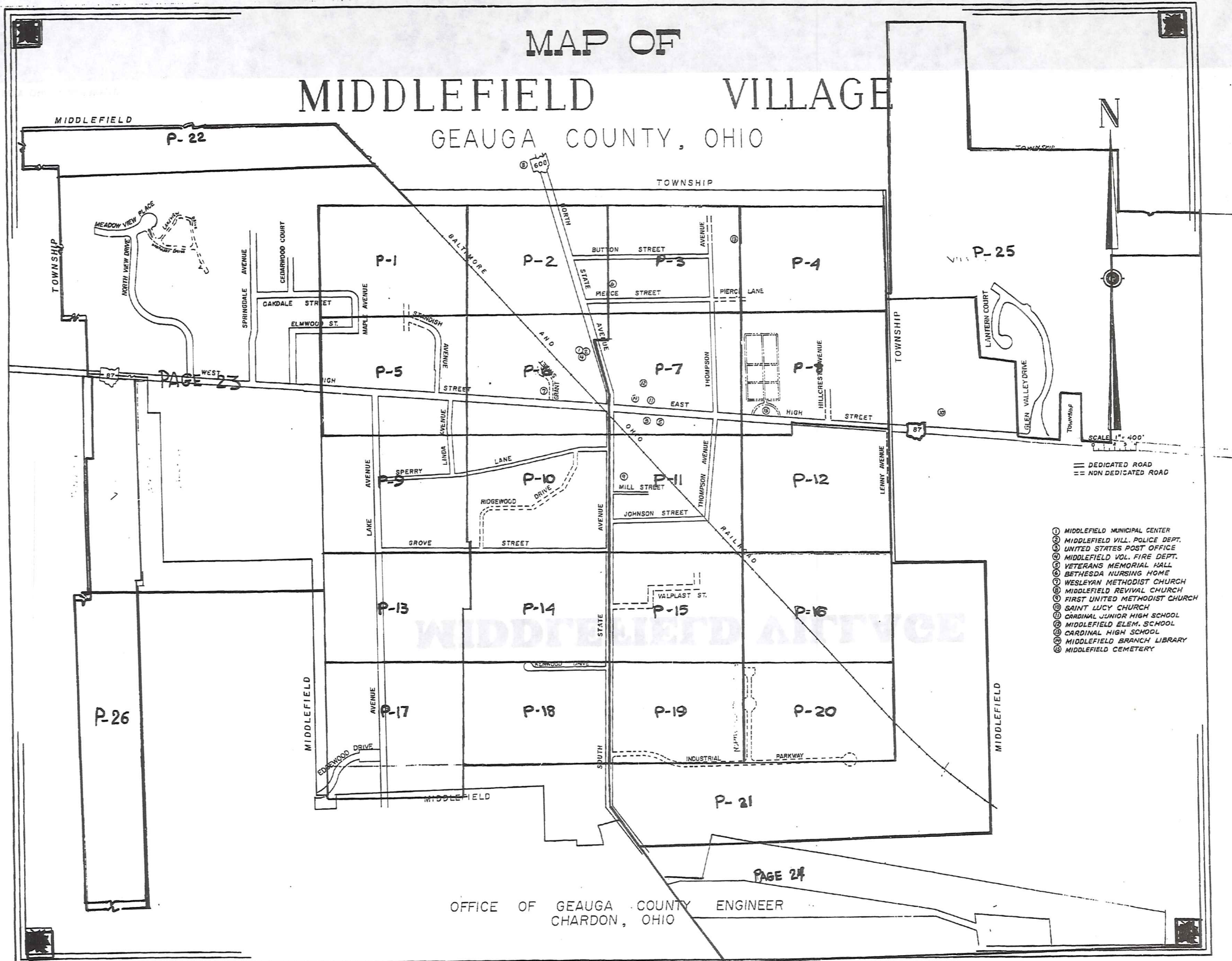
297

388

MIDDLEFIELD VILLAGE

MAP OF MIDDLEFIELD VILLAGE

GEAUGA COUNTY, OHIO



- ① MIDDLEFIELD MUNICIPAL CENTER
- ② MIDDLEFIELD VILL. POLICE DEPT.
- ③ UNITED STATES POST OFFICE
- ④ MIDDLEFIELD VOL. FIRE DEPT.
- ⑤ VETERANS MEMORIAL HALL
- ⑥ BETHESDA NURSING HOME
- ⑦ WESLEYAN METHODIST CHURCH
- ⑧ MIDDLEFIELD REVIVAL CHURCH
- ⑨ FIRST UNITED METHODIST CHURCH
- ⑩ SAINT LUCY CHURCH
- ⑪ CARDINAL JUNIOR HIGH SCHOOL
- ⑫ MIDDLEFIELD ELEM. SCHOOL
- ⑬ CARDINAL HIGH SCHOOL
- ⑭ MIDDLEFIELD BRANCH LIBRARY
- ⑮ MIDDLEFIELD CEMETERY

— DEDICATED ROAD
 - - - NON DEDICATED ROAD

SCALE 1" = 400'

298

OFFICE OF GEAUGA COUNTY ENGINEER
 CHARDON, OHIO

PAGE 24

PAGE 23

P-22

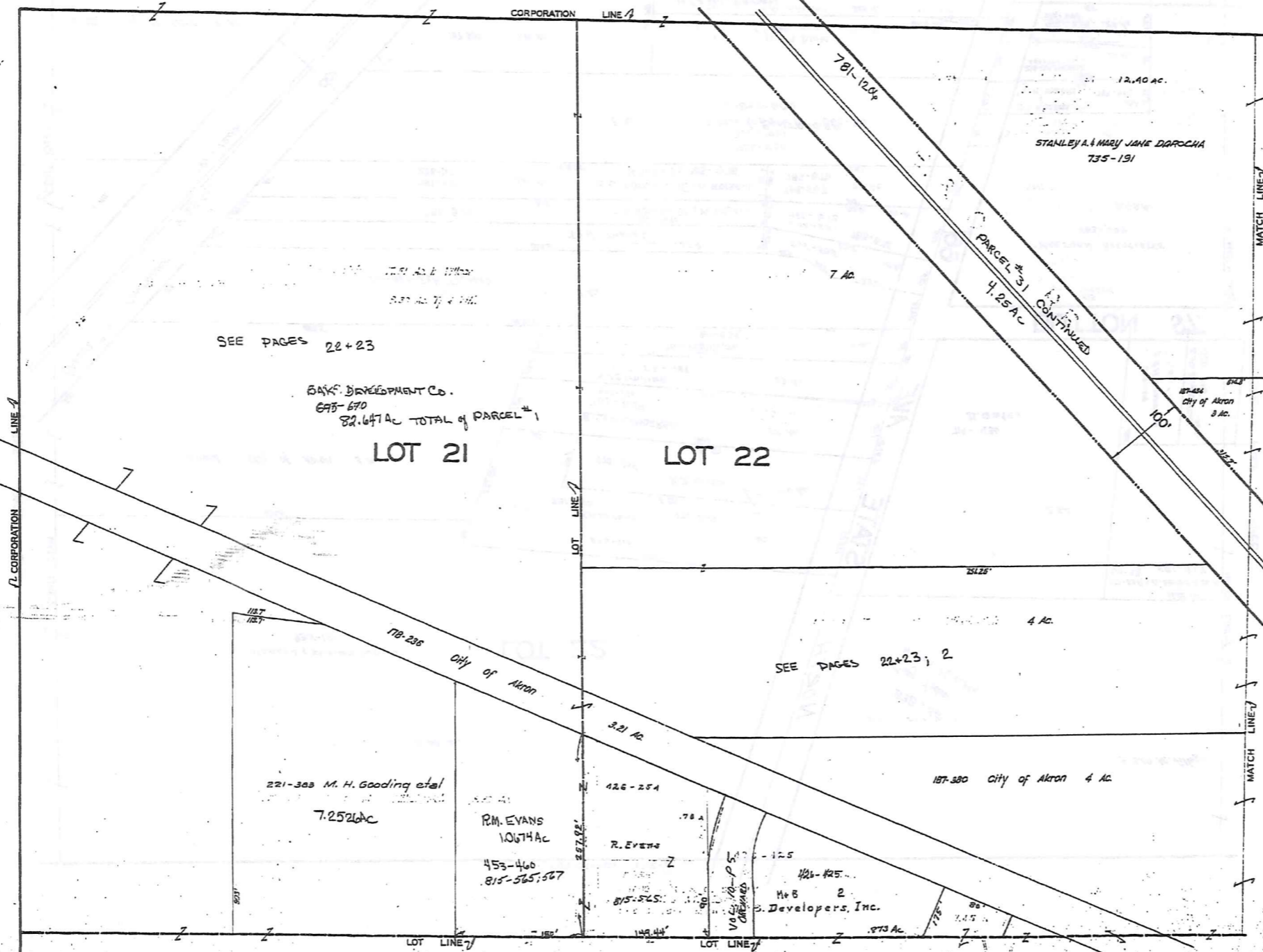
P-25

P-26

P-21

MIDDLEFIELD VILLAGE

PAGE 1

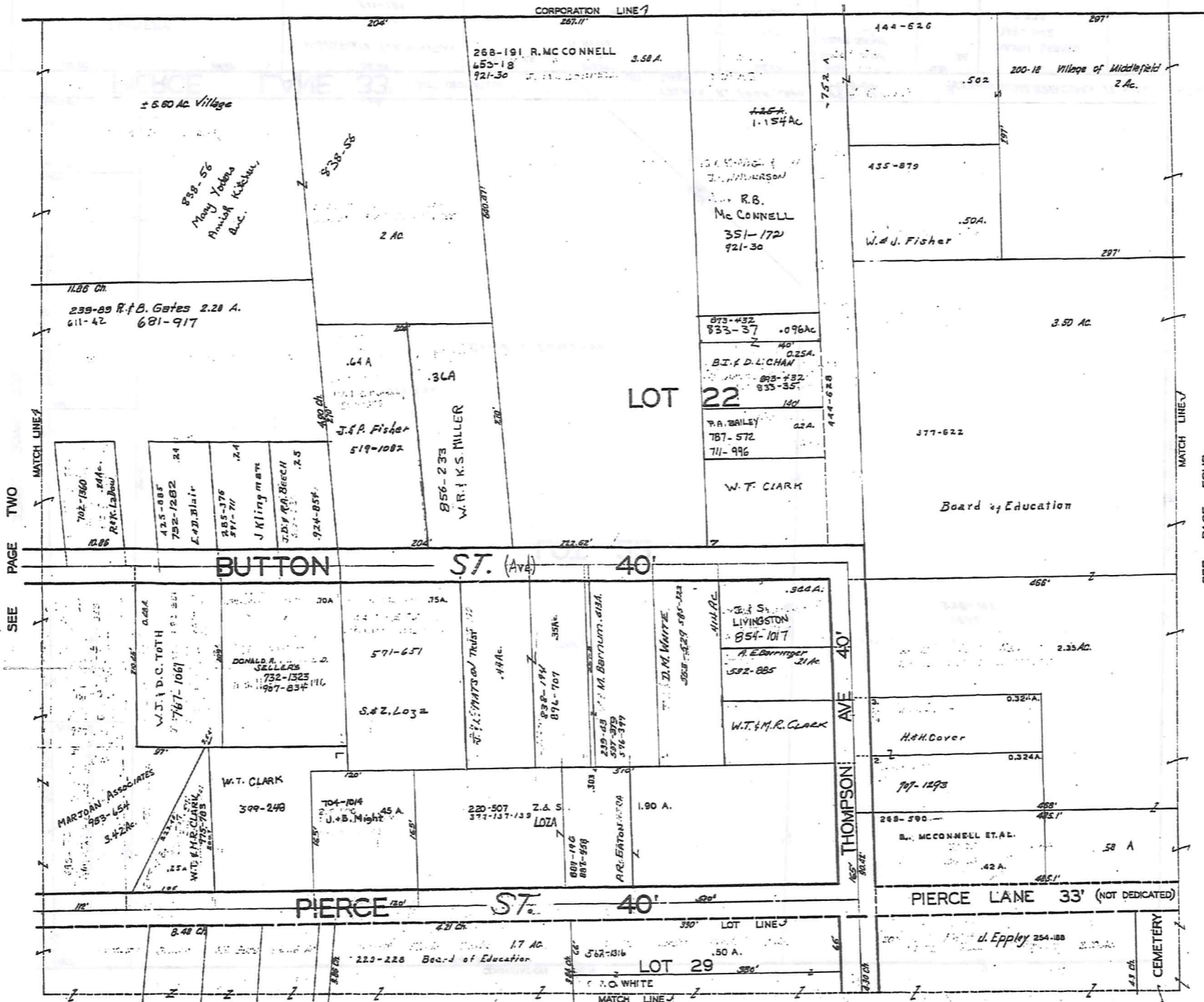


TOWN/REC'D
1-800-345-7334
SCALE IN 1/10 OF AN INCH

299

SEE PAGE FIVE

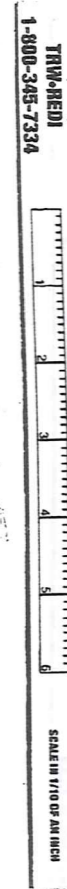
RELATIVE REPRESENTATION
MIDDLEFIELD VILLAGE
PG 1



SEE PAGE TWO

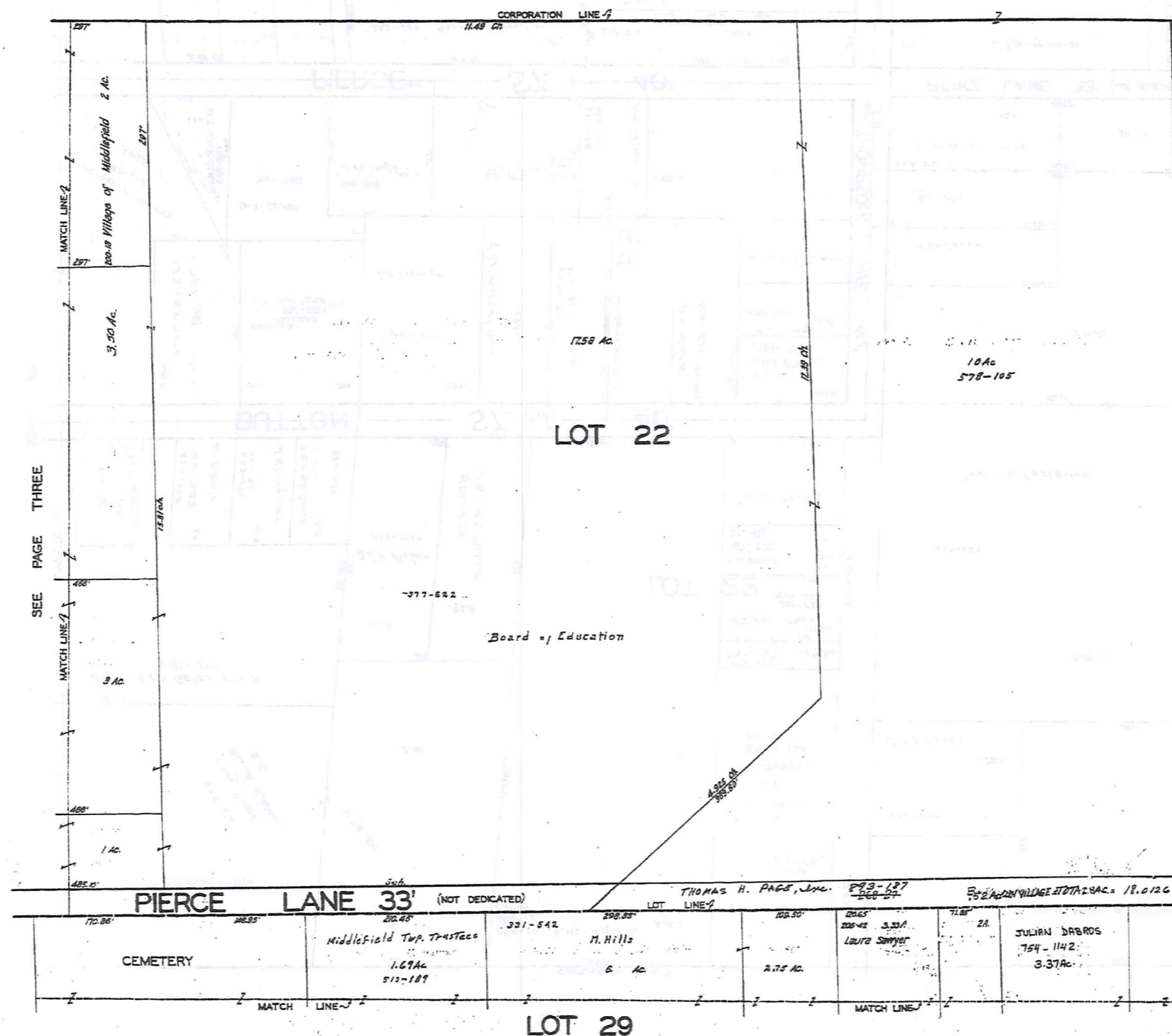
SEE PAGE FOUR

SEE PAGE SEVEN



SCALE 1"=66'

JAN. 1, 1995



TRIM-REEL
1-800-348-7338
SCALE IN YDS OR FEET



302

SEE PAGE EIGHT

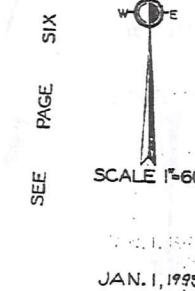
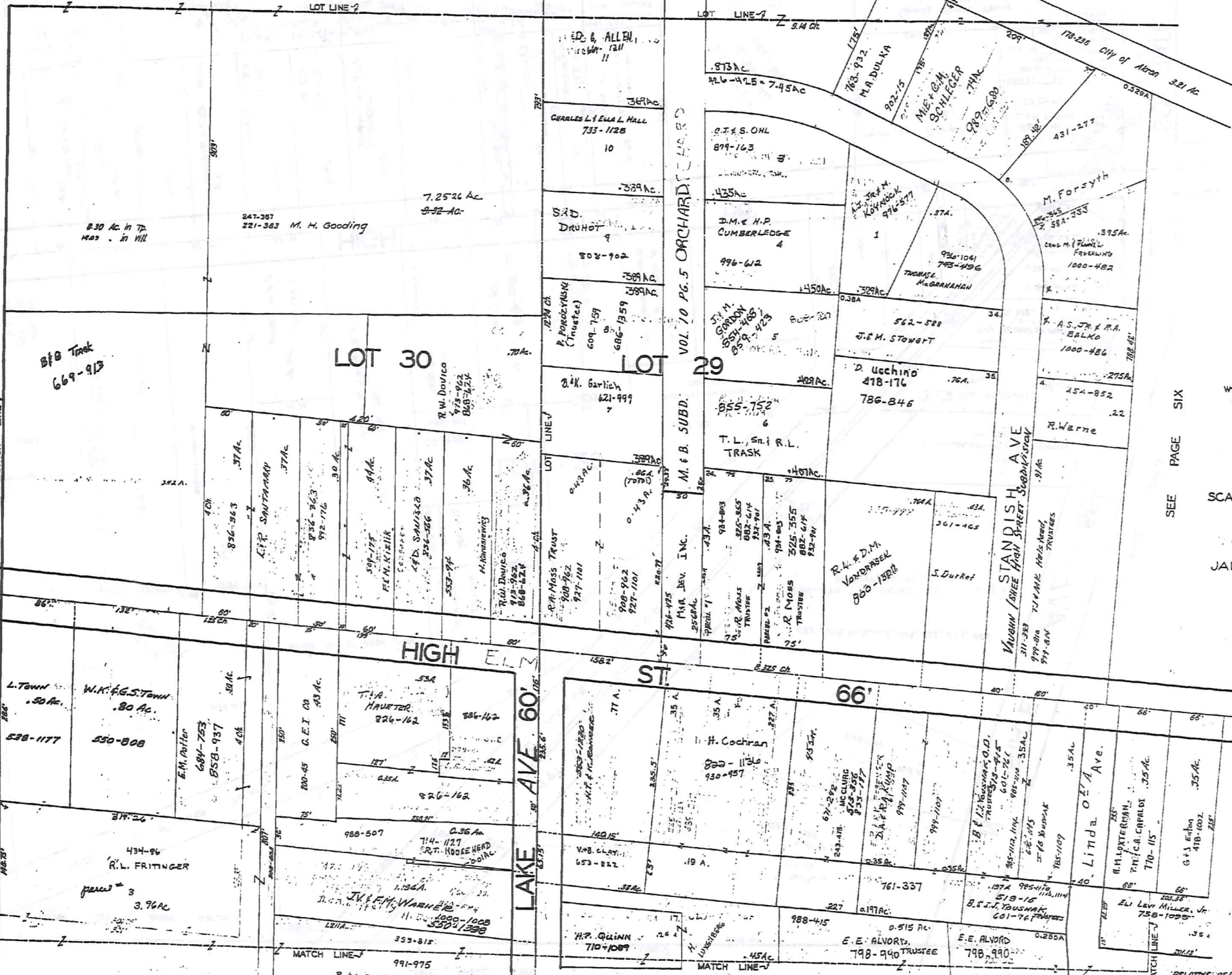
JANUARY 1, 1986
RELATIVE REPRESENTATION
MIDDLEFIELD VILLAGE
PG 4

MIDDLEFIELD VILLAGE

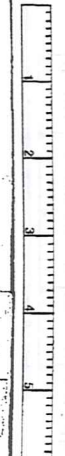
R. W. EVANS
424-254

SEE PAGE ONE

MIB DEV. INC.



1-800-345-7334



303

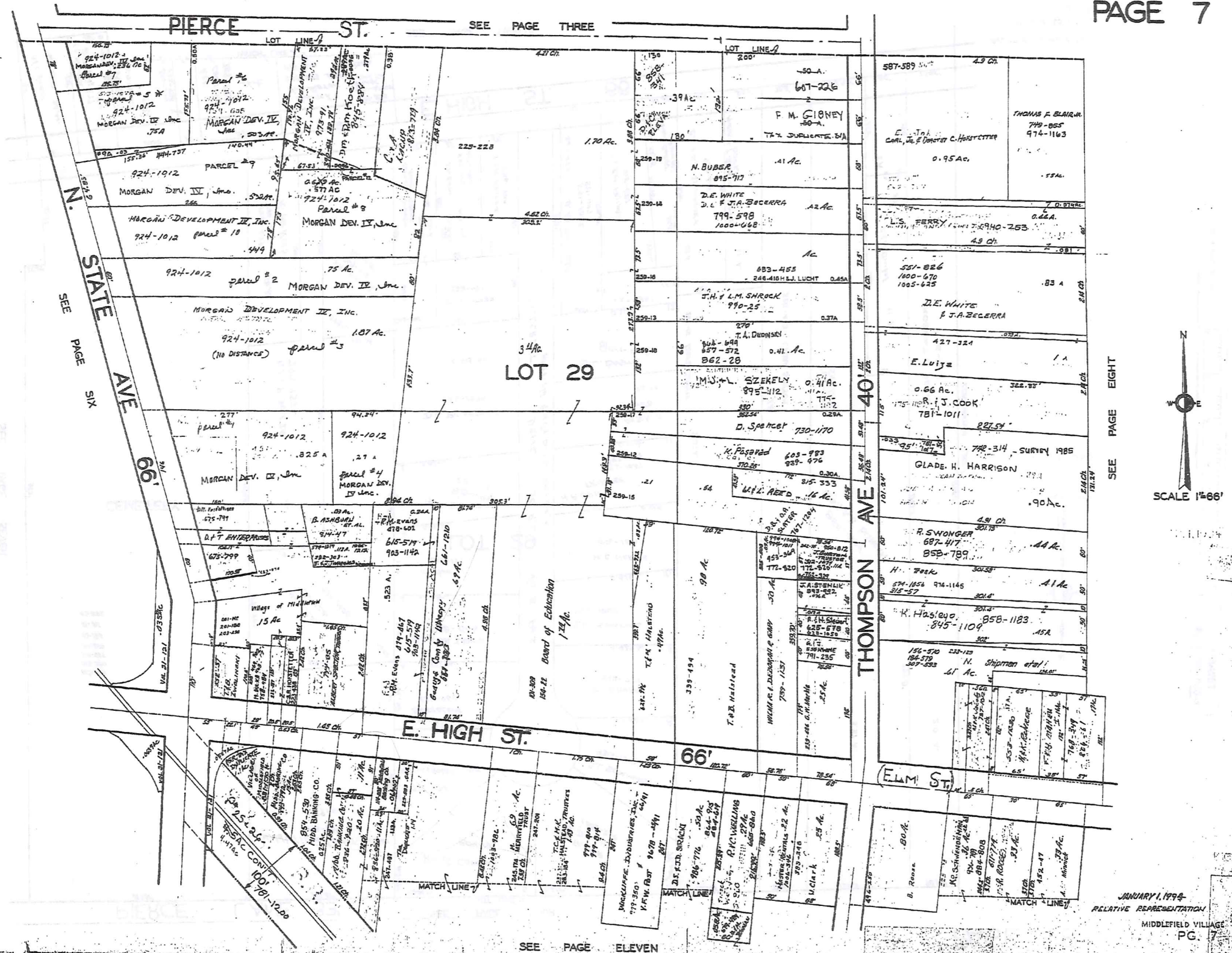
SEE PAGE SIX

JAN. 1, 1995

SEE PAGE NINE

RELATIVE REPRESENTATION
MIDDLEFIELD VILLAGE
PG. 5

MIDDLEFIELD VILLAGE



PIERCE ST. SEE PAGE THREE

STATE AVE 66' SEE PAGE SIX

LOT 29

THOMPSON AVE 40'

E. HIGH ST. 66'



305

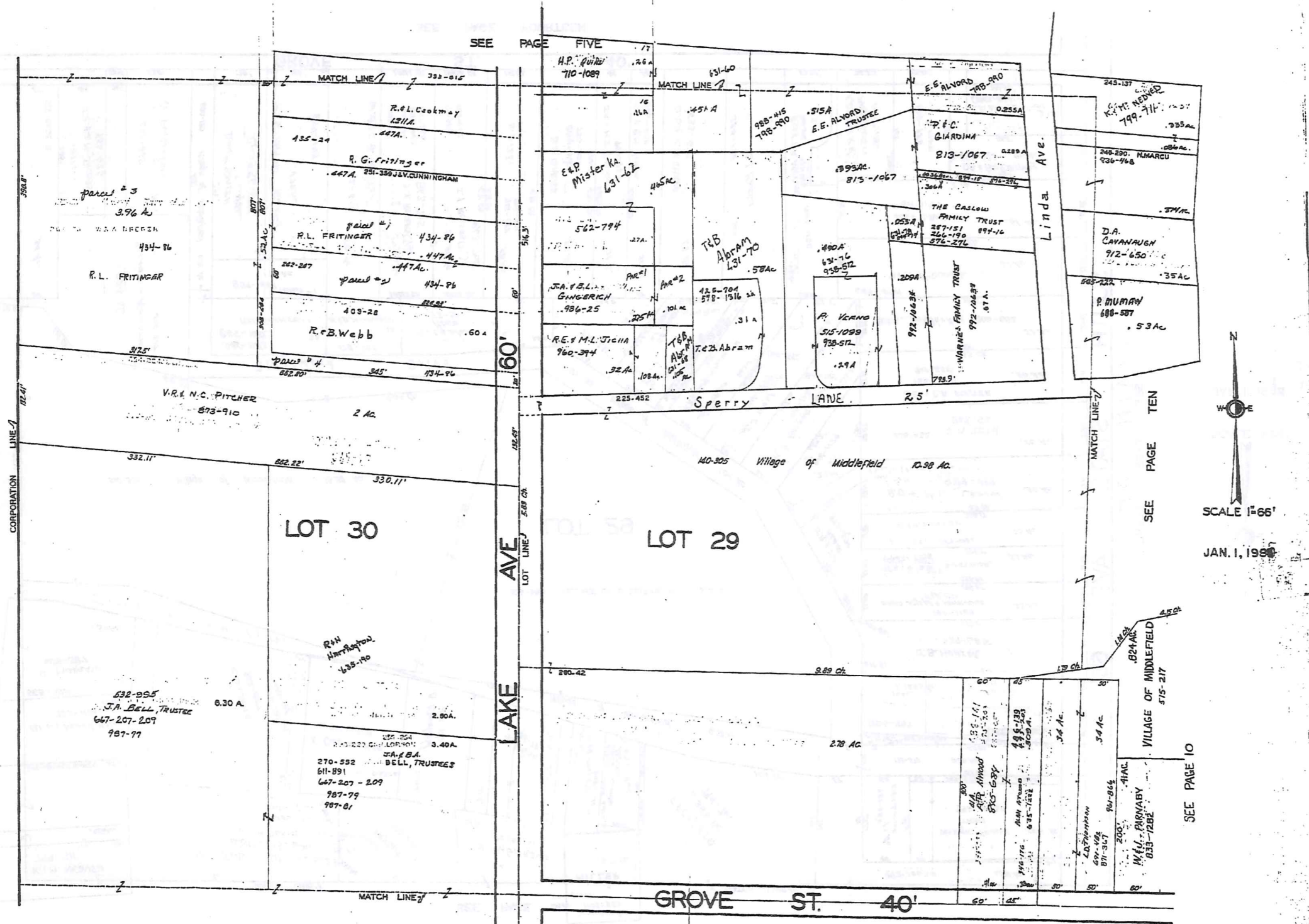
JANUARY 1, 1999
RELATIVE REPRESENTATION
MIDDLEFIELD VILLAGE
PG. 7

SEE PAGE ELEVEN

1-800-345-7334

SCALE IN 1/100 OF AN INCH

MIDDLEFIELD VILLAGE



TRW-REDI
1-800-348-7334

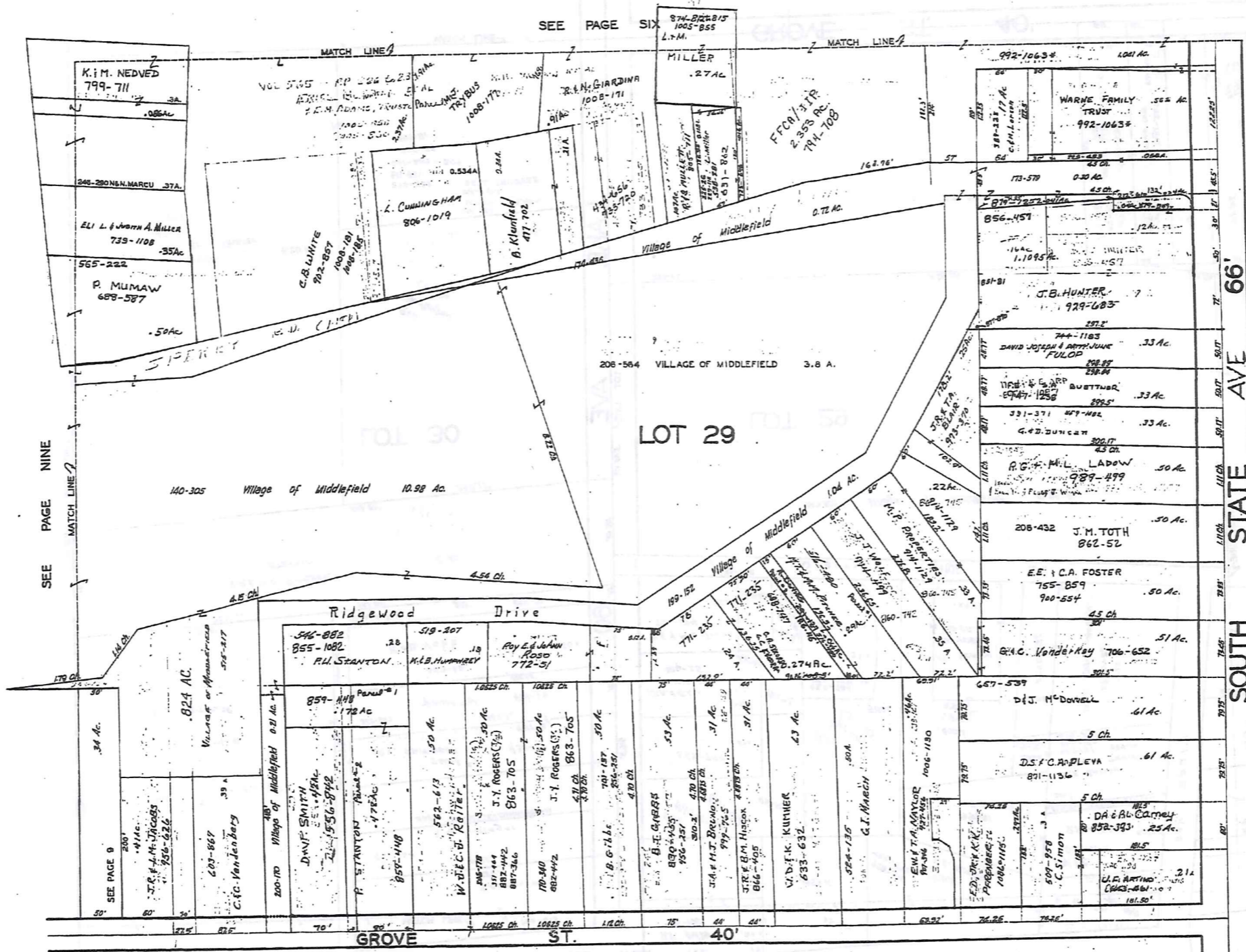
307



JAN. 1, 1988

SEE PAGE 10

SEE PAGE THIRTEEN



SEE PAGE NINE

SEE PAGE SIX

LOT 29

SEE PAGE FOURTEEN

SOUTH STATE AVE 66'

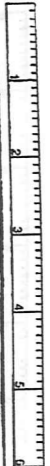
MAIN ST ELEVEN



SCALE 1" = 66'

JAN. 1, 1956

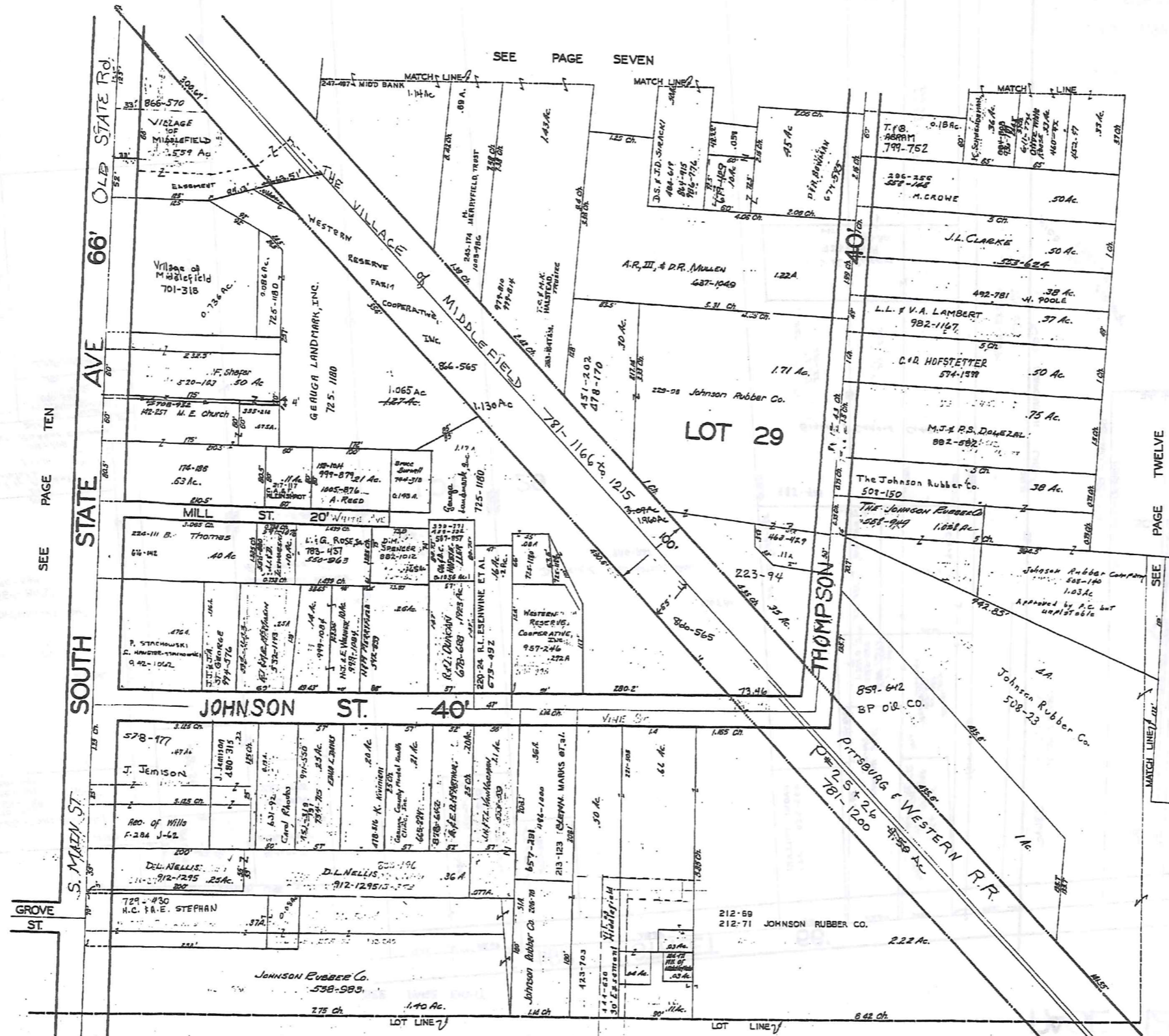
TRW-REDI
1-800-345-7334



SCALE IN 1/16" OF AN INCH

308

MIDDLEFIELD VILLAGE



TRIM-REED
1-800-345-7336

SCALE IN YDS OR INCHES

309



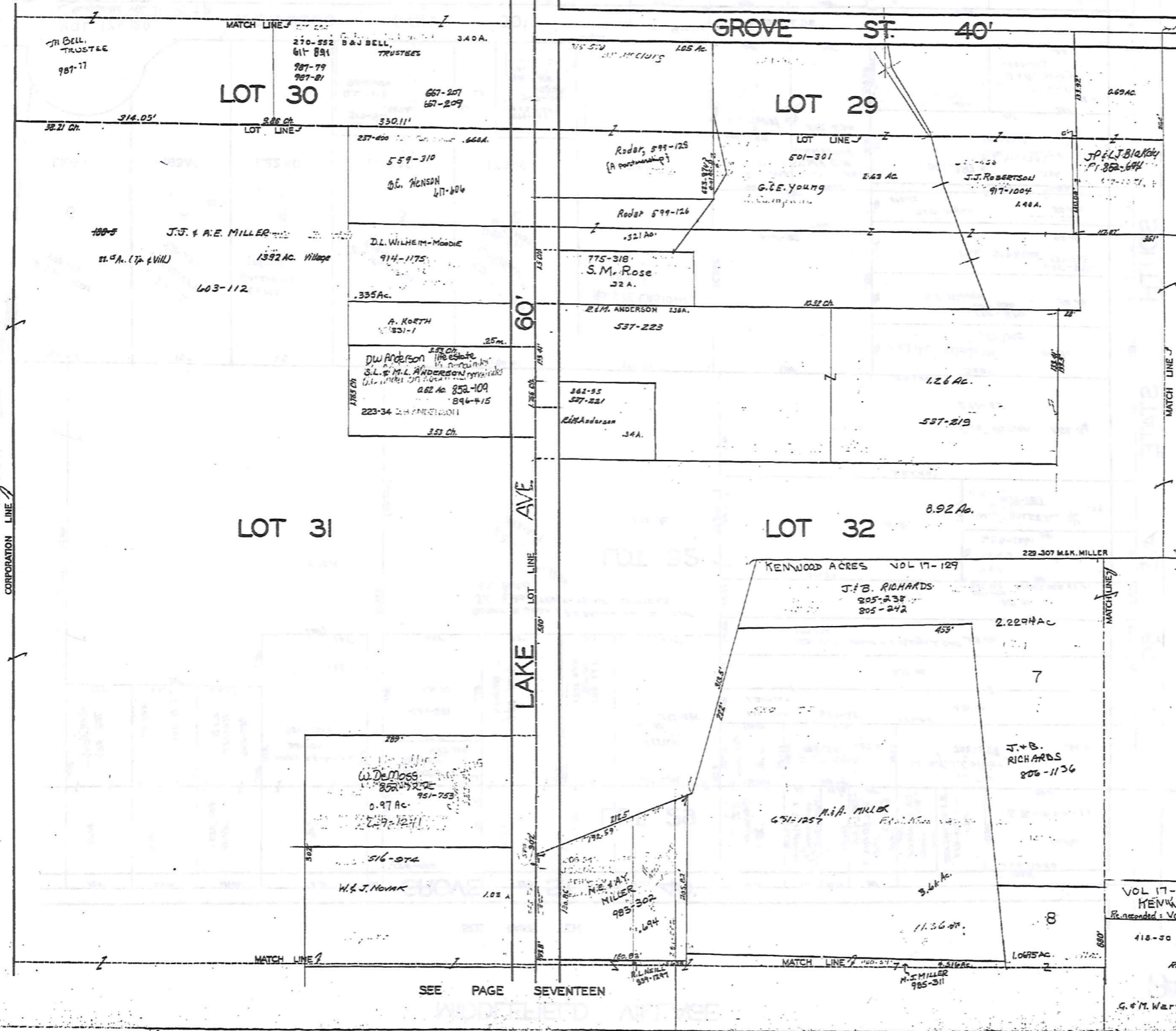
SCALE 1"=66'

JAN. 1, 1995

RELATIVE REPRESENTATION

MIDDLEFIELD VILLAGE

SEE PAGE NINE



TRIM-RED
1-800-345-7334

311

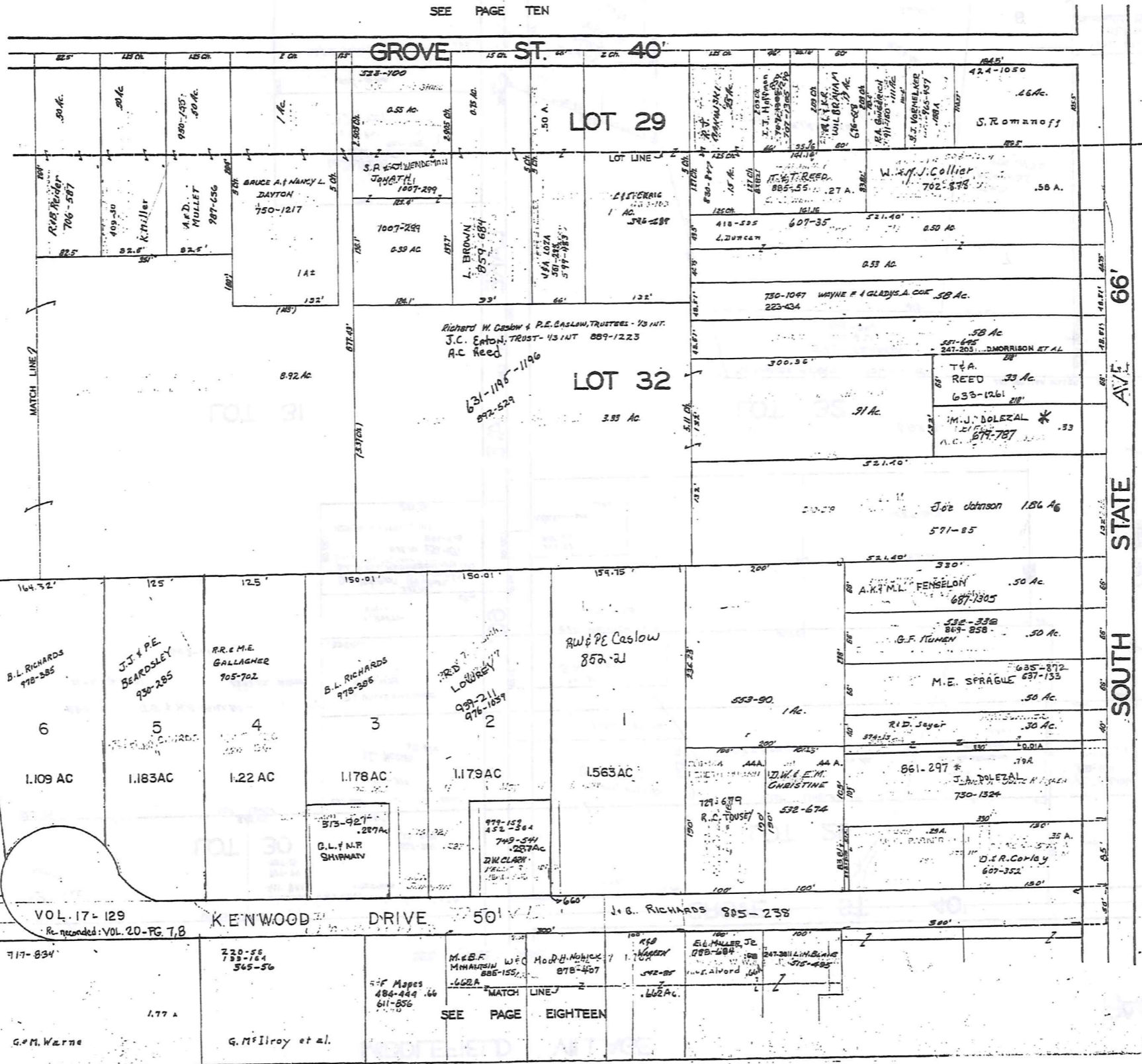
SCALE IN 1/16 OF AN INCH

SEE PAGE SEVENTEEN

VOL 17-129-130
 KENWOOD ACRES. S4.8
 Re-platted: Vol. 20-PG. 7, 8
 418-30
 RELATIVE REPRESENTATION
 MIDDLEFIELD VILLAGE
 PG. 13
 G. M. Warner
 177

MIDDLEFIELD VILLAGE

SEE PAGE TEN



PAGE THIRTEEN

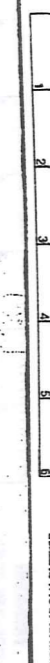
SEE PAGE FIFTEEN



SCALE 1"=66'

JAN. 1, 1995

1-800-345-7334

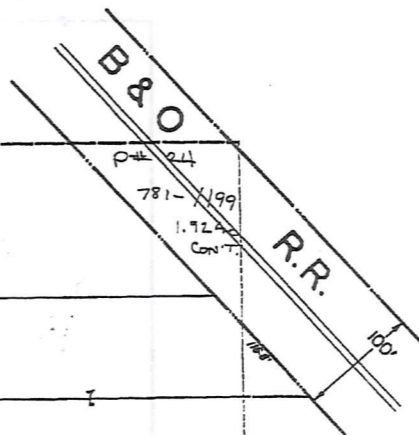
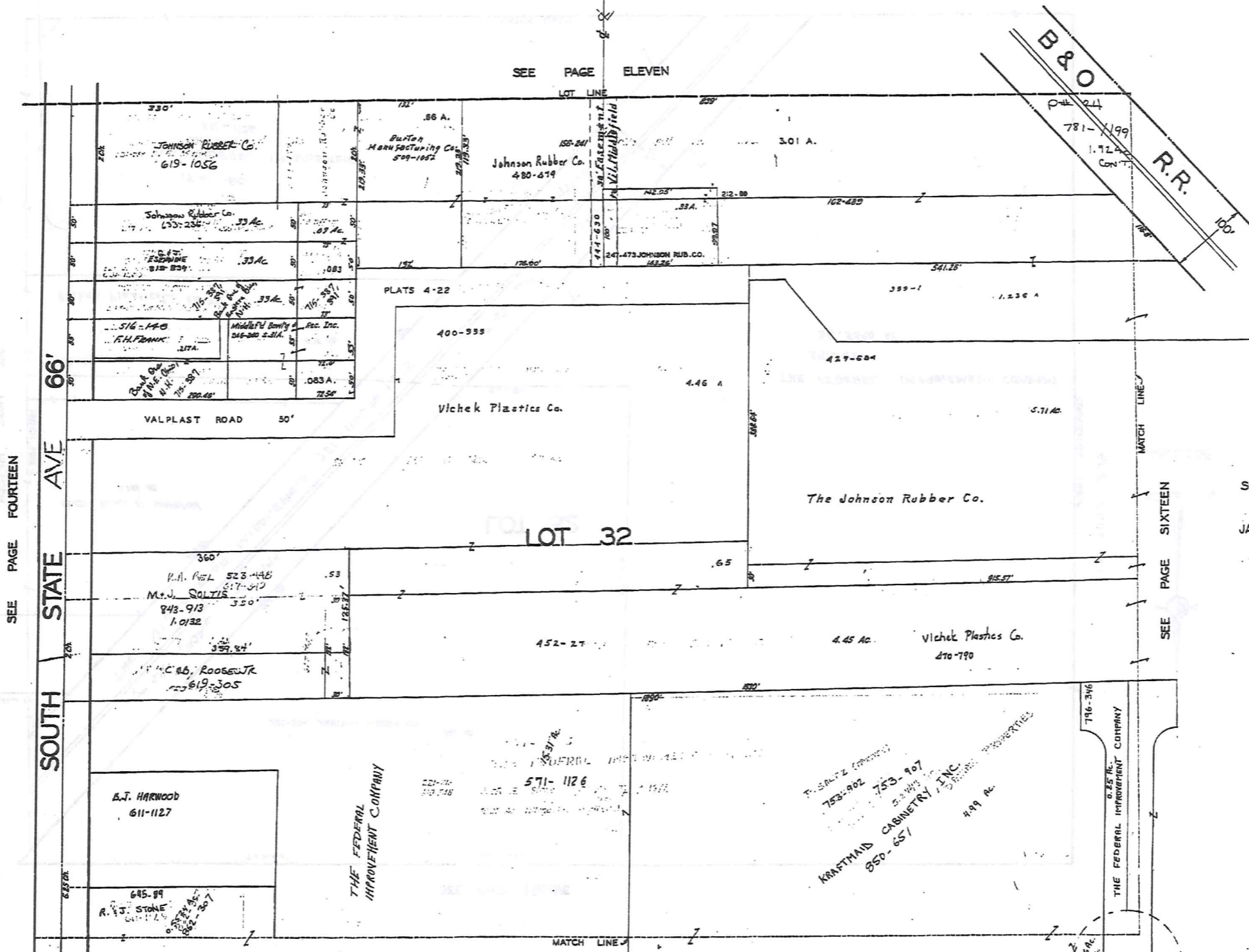


312

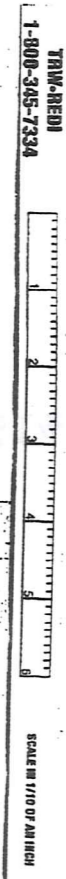
RELATIVE REPRESENTATION

MIDDLEFIELD VILLAGE PG. 14

MIDDLEFIELD VILLAGE



SCALE 1"=66'
 JAN. 1, 1995



313

SEE PAGE FOURTEEN

SOUTH STATE AVE 66'

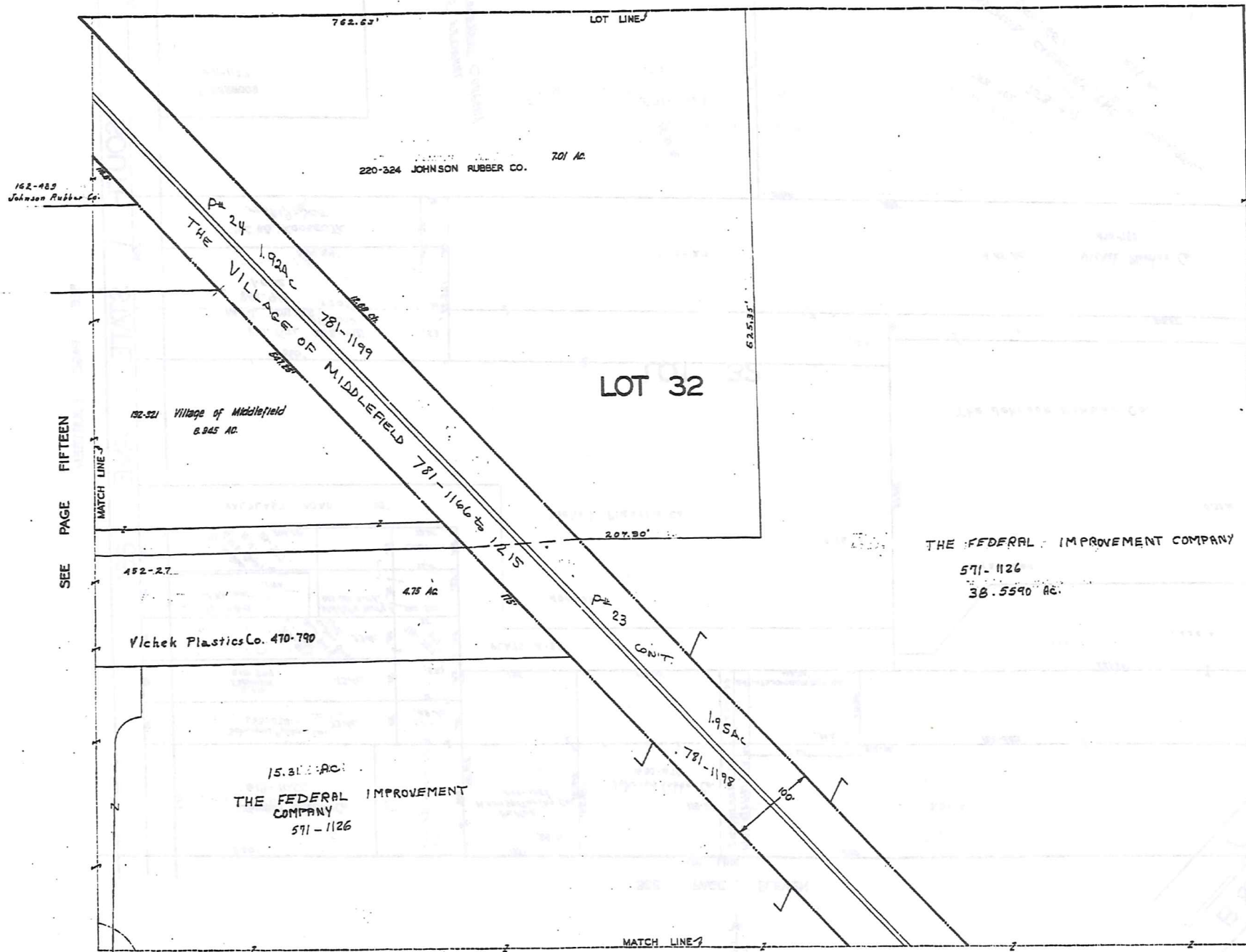
SEE PAGE ELEVEN

SEE PAGE SIXTEEN

SEE PAGE NINETEEN

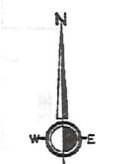
RELATIVE REPRESENTATION

SEE PAGE TWELVE



SEE PAGE TWENTY

SEE PAGE 21



SCALE 1"=66'

JAN. 1, 1995

1-800-345-7334
 TAU-REDI
 SCALE 1/16" OF AN INCH
 HARRIS

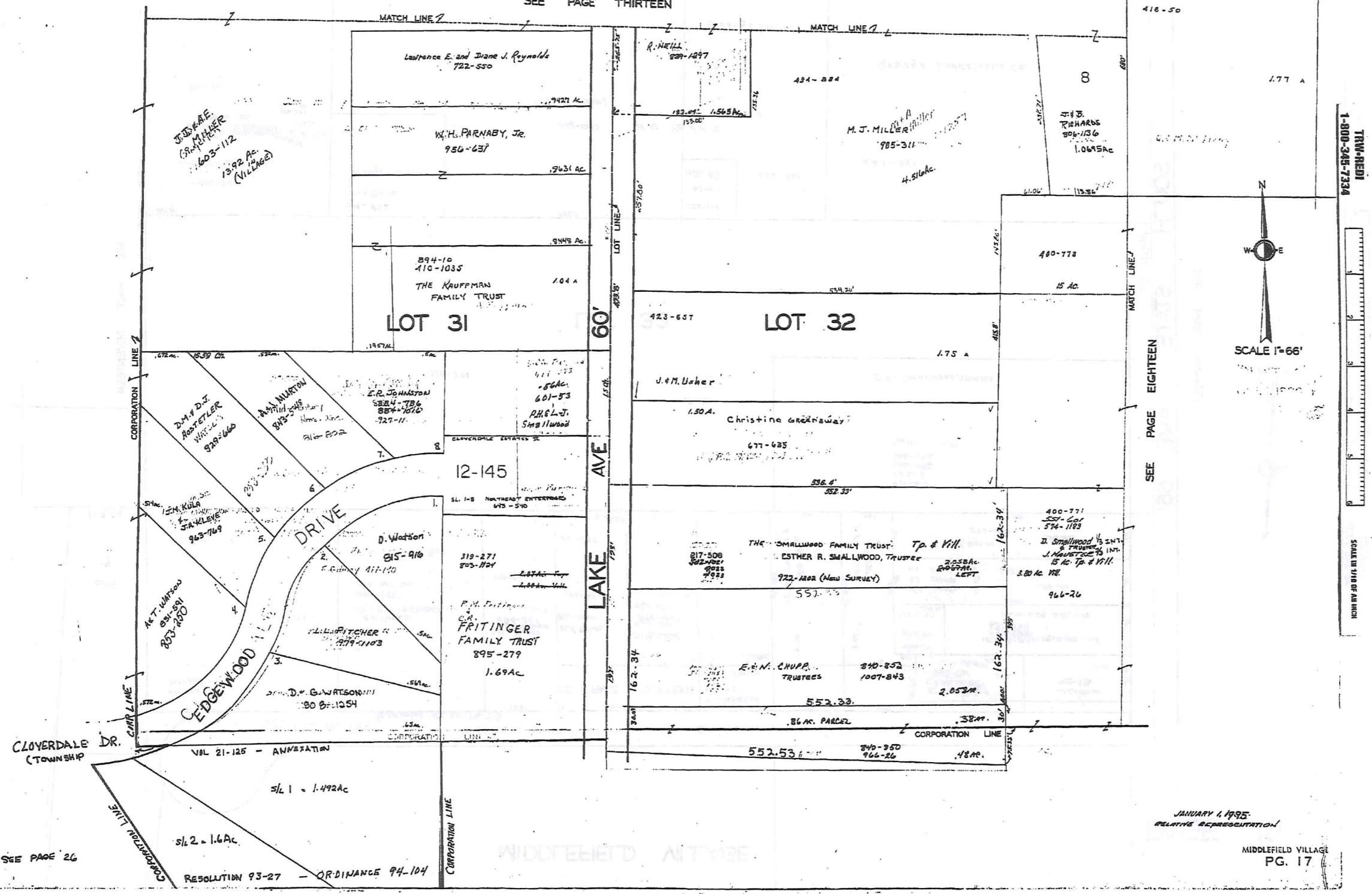
314

RELATIVE REPRESENTATION

MIDDLEFIELD VILLAGE

VOL 17-129
KENWOOD ACRES SUB.
Gr. Ordinance: VOL 20-Pg. 7, 8

SEE PAGE THIRTEEN



TRIM-REDI
1-800-345-7334
SCALE IN 1/16" OF AN INCH

315

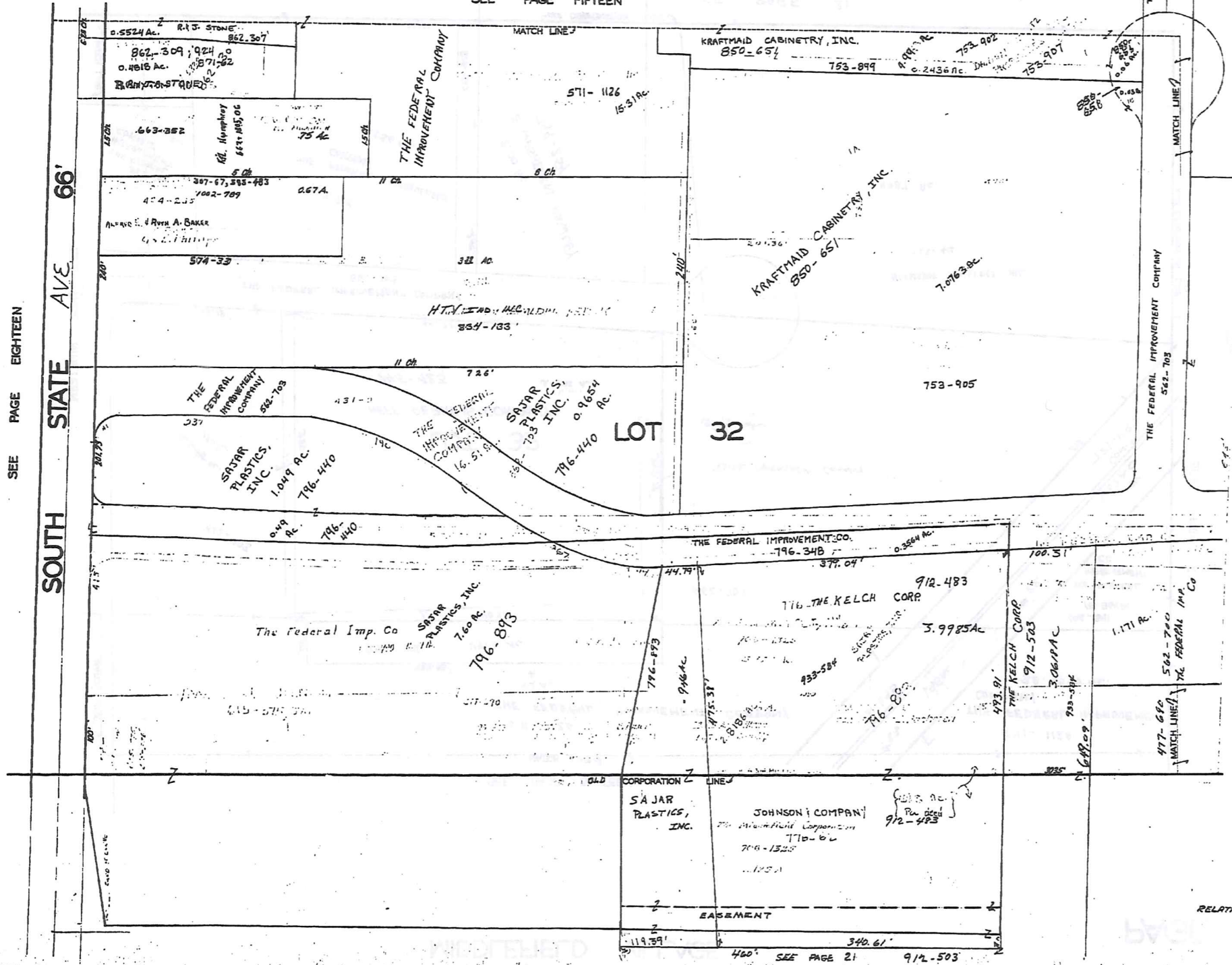
JANUARY 4, 1995
RELATIVE REPRESENTATION

SEE PAGE 26

RESOLUTION 93-27 - ORDINANCE 94-104

MIDDLEFIELD VILLAGE

SEE PAGE FIFTEEN



SEE PAGE EIGHTEEN

SOUTH STATE AVE. 66'

SEE PAGE TWENTY



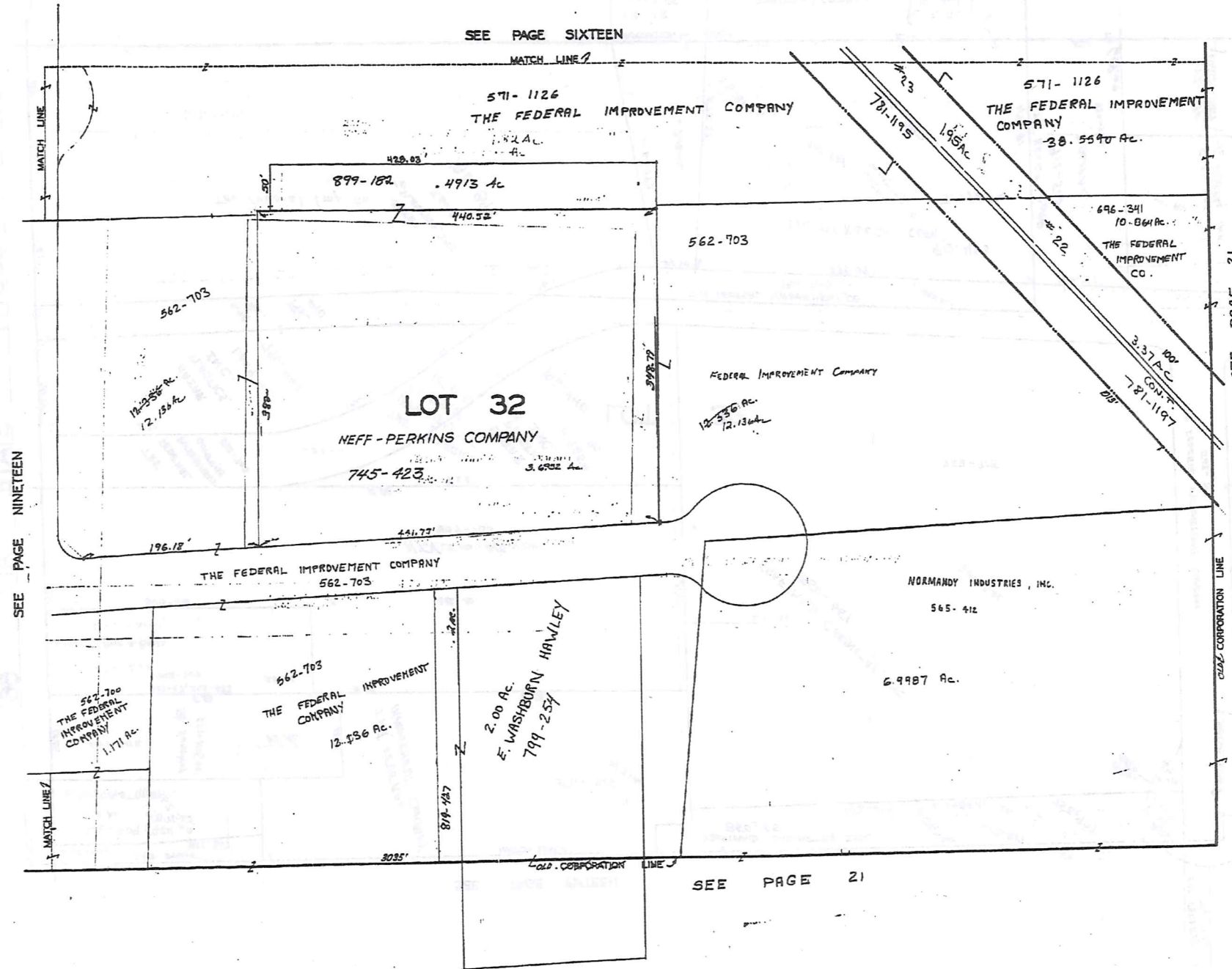
JAN. 1, 1955

1-800-345-7334 TRWA-BEEM

SCALE IN FEET OR AN INCH

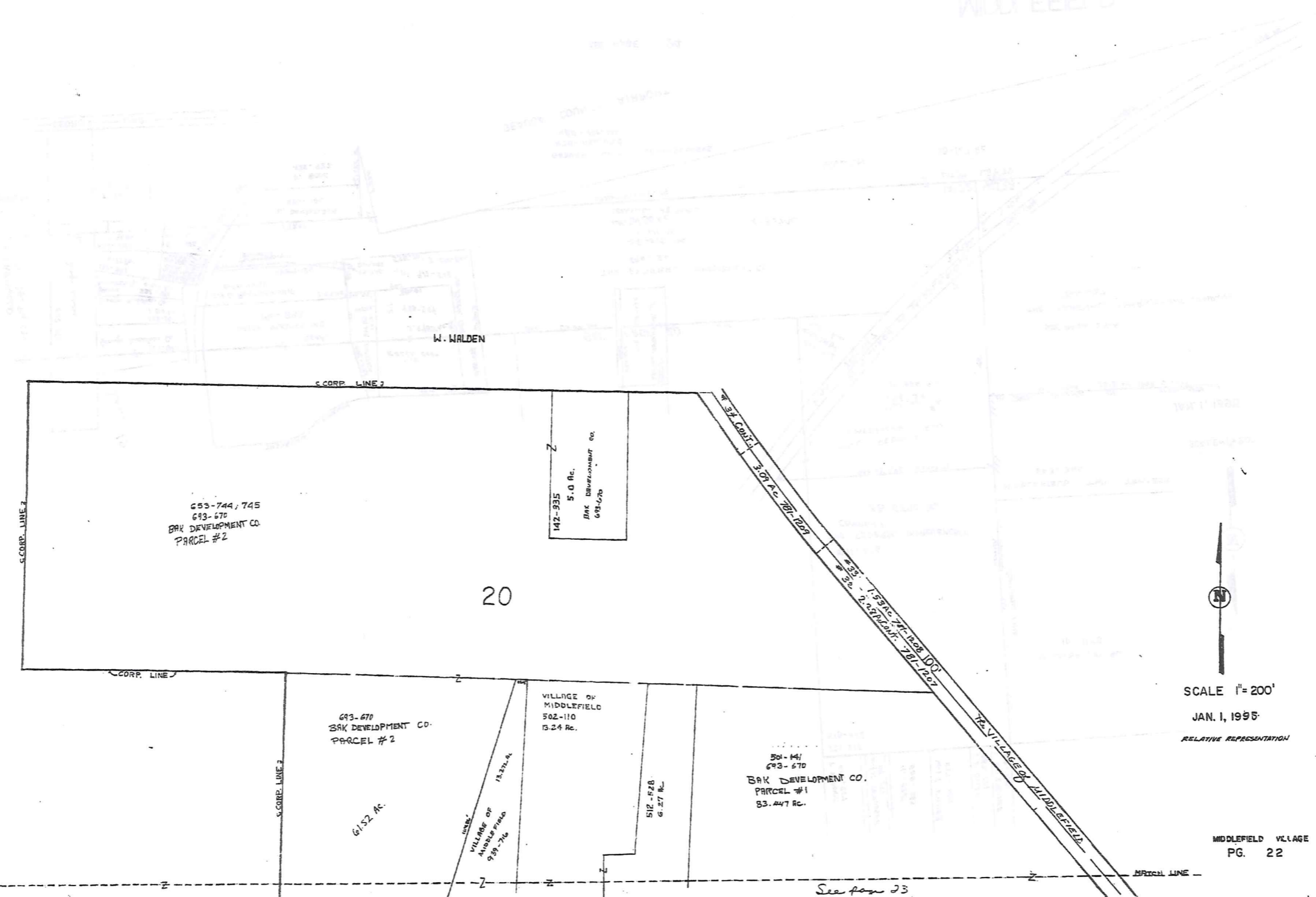
317

SEE PAGE 21 912-503



318

MIDDLEFIELD VILLAGE



TRIV-REID
1-800-345-7334

SCALE IN 1/16" OF AN INCH

320

SCALE 1" = 200'
JAN. 1, 1995
RELATIVE REPRESENTATION

MIDDLEFIELD VILLAGE
PG. 22

See page 23

See page 22

MATCH LINE

MATCH LINE



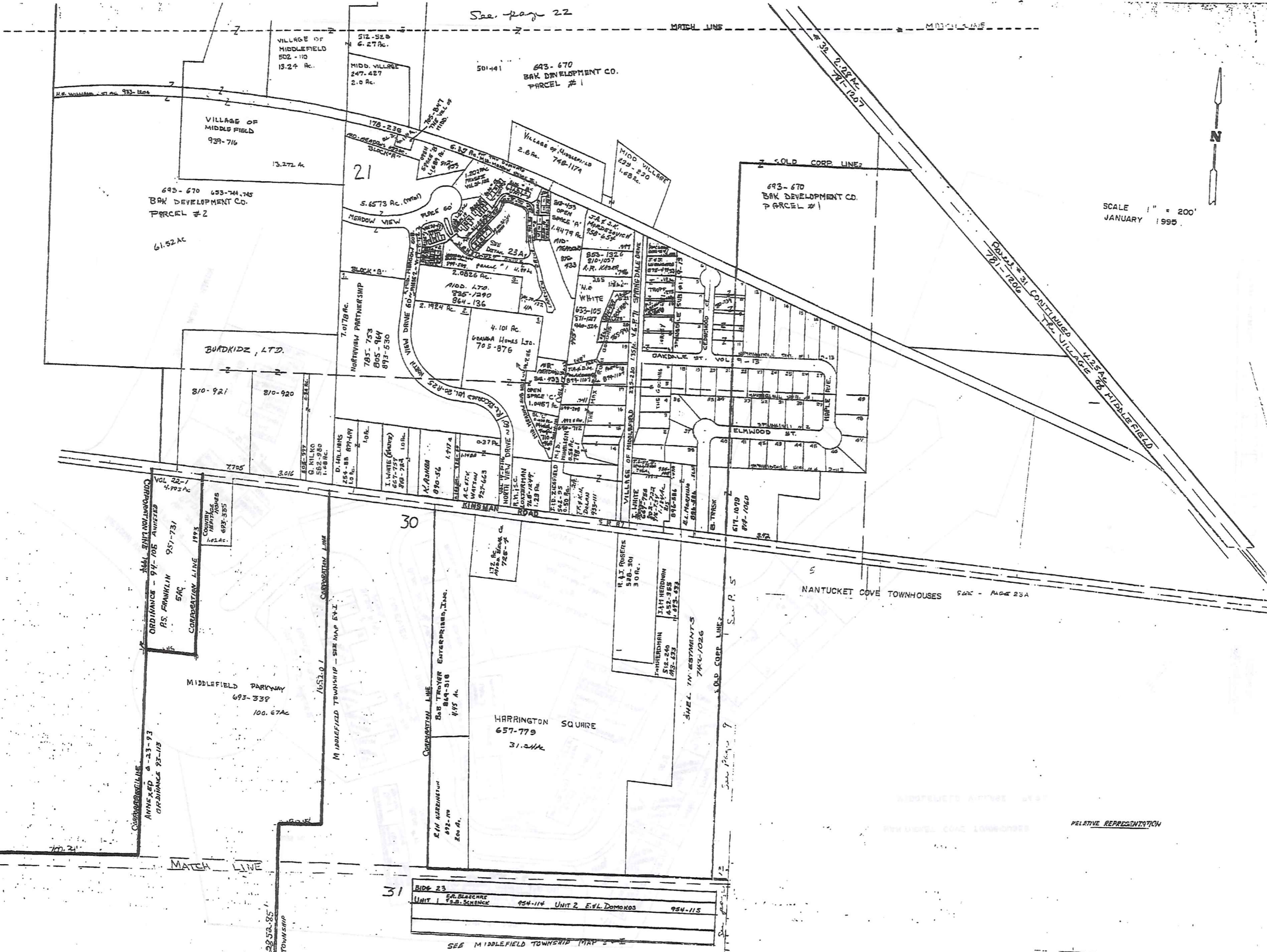
SCALE 1" = 200'
JANUARY 1995

TAM-REGD
1-800-345-7334



SCALE IN 1/16" OF AN INCH

321



SEE MIDDLEFIELD VILLAGE PAGE 26

MIDDLEFIELD VILLAGE PAGE 23

31	BIDS 23	SR. BLANCHÉ	954-114	UNIT 2	EVL. DOMOKOS	954-115
		FR. SCIENCE				

SEE MIDDLEFIELD TOWNSHIP MAP

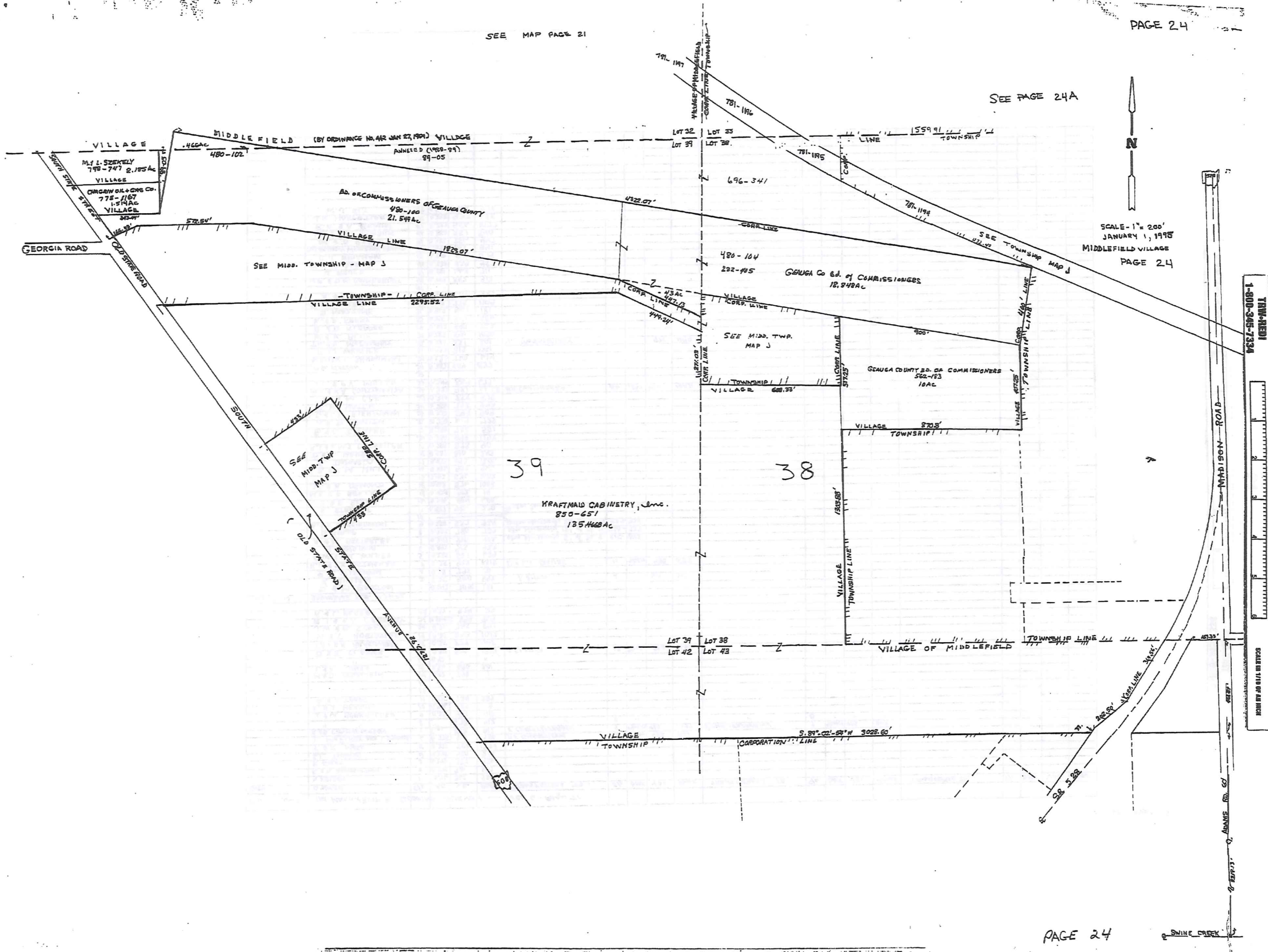
RELATIVE REPRESENTATION

MIDD. VILLAGE	THE MAX. & RUTH B. COODING SURVEY	VOL 6 - Page 71				VOL 9 - 13											
DATE	OWNER	S/L	AC	VOL	PAGE	TRANSFERRED TO	S/L	DATE	VOL	PAGE	TRANSFERRED TO	S/L	DATE	VOL	PAGE	TRANSFERRED TO	
	N. NELSON	1	0.26	512	720	TRANSFERRED TO:											
	R. & D. BAUMANN	2	0.75	301	697												
	F. FALES	3	0.15	387	456												
	S.L. THOMAS	4	0.25	480	812												
	T. R. MOSE	5	0.25	552	1278												
	L. McELROY aka L. EDWARDS	6	0.25	910	526	P.E. GILBERTSON	4	7/27/82	982	861							
	R.E. CHRISTOFFERSON	7	0.21	878	917	E. CHRISTOFFERSON	7	7/27/82	982	1227							
	"	8	0.21	873	912	"	8	"	"	"							
	J. M. BORKHOLDER	9	0.27	475	418												
	K. & J. HERRON	10	0.26	785	9												
	G. & J. TROFF	11	0.25	734	287												
	"	12															
	M.D. MIHALIRIN	14	0.28	798	1												
	L.E.K. JONES	15	0.26	690	201												
	"	16	0.42	"	"												
	D. S. CLARKE	17	0.29	576	1351	S. CLARKE	17	7/27/82	982	126							
	T.A. & D.K. POLAKOWSKI	18	0.25	779	1107												
	W. & T. HOSTETLER	19	0.25	833	1017												
	J.W. & B. STEELE	20	0.24	765	891												
	B. & E.A. CSOKMAY	21	0.22	894	969												
	R. L. KASER	22	0.27	524	33												
	VOL 9 - 13																
	SPRINGDALE SUB. #1 & 2																
	D. & M. BARTON	1	0.247	705	121												
	K. GUILLEN	2	0.25	550	872	J. SIMONS	2		619	372							
	P. L. WISEMAN	3	0.25	725	31												
	R.L. & T.K. DETWEILER	4	0.25	823	1312	E. & L.E. GAUSE	4	5/20/82	982	537							
	S.W. & B.V. WILKES	5	0.25	523	639												
	N. LANGHAM	6	0.22	918	933												
	A. & M. SATTERLEE	7	0.27	915	442												
	G. EULOP	8	0.22	782	739												
	A. & D. BERCIKOWSKI	9	0.22	527	924												
	"	10															
	E. STEWART	11	0.247	936	270												
	E. & E. SELBY	12	0.27	824	640												
	M. & F. BRILLANT	13	0.24	912	14												
	W. & E. OSMAND	14	0.24	576	1033												
	"	15	0.24	576	1032												
	A. B. & R. M. HILL	16	0.25	902	944												
	R. DODARCA	17	0.24	693	1206												
	D. & C. HERSH	18	0.237	816	243												
	R. J. & M. Z. DETWEILER	19	0.22	878	90												
	"	20	0.25	846	1198												
	E. & C. ZIEGLER	21	0.25	782	551												
	J. & D. SMITH	22	0.25	617	722												
	L. & J. E. FIERMANN	23	0.25	593	909												
	R. R. WATCH	24	0.25	772	299												
	E. & M. COX	25	0.25	855	519												
	M. & K. A. CONTINENZA	26	0.237	921	612	M.A. CONTINENZA	26	12/27/82	996	1022							
	J. L. & P. V. MILLER	27	0.24	527	672												
	"	28															
	R. G. WATSON	29	0.27	859	837												
	N. & N. L. SHUMINSKI	30	0.23	723	614												
	R. & J. WEIRICK	31	0.23	813	1031												
	T. & V. McFANNY	32	0.22	557	201	V. McFANNY			974	499							
	W. & K. ALUP	33	0.22	537	1090												
	R. & D. KLEPPER	34	0.22	598	722												
	K. & E. EBBY	35	0.22	551	256												
	B. MAZZANE	36	0.22	551	181												
	D. M. MARES	37	0.23	775	1109												
	A. & S. PETRICK	38	0.22	661	337												
	"	39															
	W. E. & D. M. CENTERBURY	40	0.23	522	912												
	J. BRUCE	41	0.21	663	711												
	T. & P. AKERS	42	0.22	839	457												
	C. J. BRIGHAM	43	0.27	551	574												
	ALLEGHENY WESLEYAN METHOD.	44	0.27	647	541												
	M. & D. ROACH	45	0.27	856	447												
	J. & K. M. BLASINS	46	0.22	551	540												
	R. & A. BRAUN	47	0.27	552	1077												
	J. R. HOSTETLER	48	0.23	937	625												
	W. J. SLY	49	0.22	766	771												

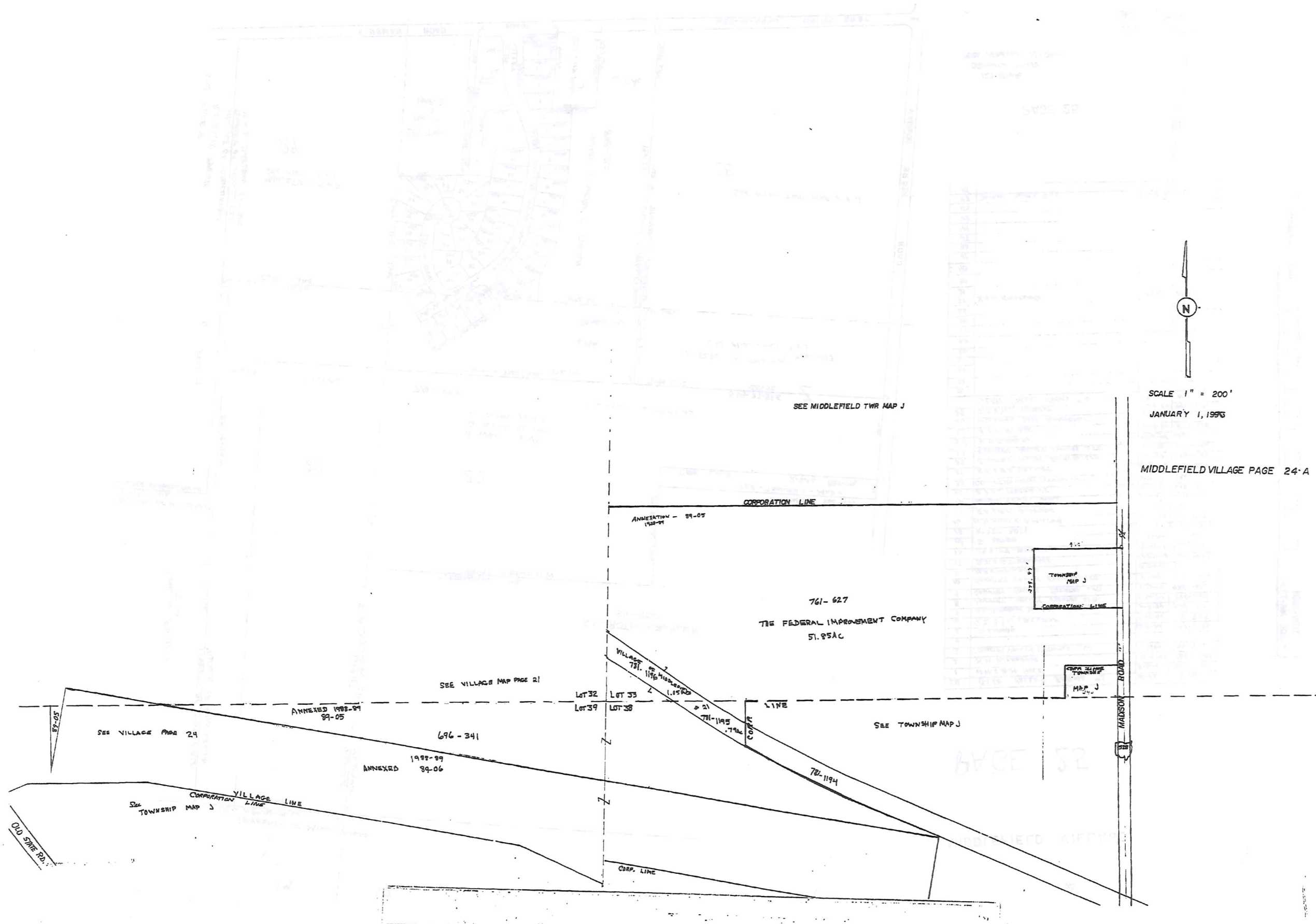
TRIM-BED
 1-800-345-7334
 SCALE IN 1/16" OR SMALLER

323

SEE PAGE 24A



324



SEE MIDDLEFIELD TWR MAP J

CORPORATION LINE

ANNEXATION - 89-05
1988-89

761-627
THE FEDERAL IMPROVEMENT COMPANY
51.85AC

TOWNSHIP
MAP J

SEE VILLAGE MAP PAGE 21

LOT 32
LOT 33
LOT 38
LOT 39

VILLAGE LINE

SEE TOWNSHIP MAP J

SEE VILLAGE PAGE 24

696-341

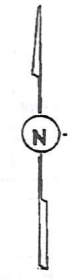
ANNEXED 1988-89
89-05

ANNEXED 1988-89
89-06

CORPORATION LINE
VILLAGE LINE
SEE TOWNSHIP MAP J

CORP. LINE

OLD STATE RD.



SCALE 1" = 200'
JANUARY 1, 1996

MIDDLEFIELD VILLAGE PAGE 24-A

1-800-345-7334
TAM-REDI
SCALE IN 1/10 OF AN INCH



MIDDLEFIELD VILLAGE

PAGE 25

S/L	OWNER	DATE	VOLUME
1	W.W. & B.M. HILL	9-10-93	953-532
2	N.M. PUSKARIUS	12-16-93	966-1085
3	COUNTRY VALLEY ESTATES, L.L.C.	7-18-94	966-395
4			
5	J. LINNAN	12-1-94	1002-1179
6	J.J. & E.L. LAZZARINI	7-18-94	988-329
7	M.L. PATRICKSON, SR. & Y.M. PATRICKSON	1-11-94	968-149
8	COUNTRY VALLEY ESTATES, LTD.	9-30-94	975-1007
9	COUNTRY VALLEY ESTATES, LTD.	9-30-94	975-1007
10	COUNTRY VALLEY ESTATES, LTD.	2-1-95	1007-128
11	P.B. & M.M. HANISH	12-30-93	967-1170
12	B.J. & G.T. WALLACE	12-30-93	967-1073
13	D.S. & P.S. MIHALIC	12-29-93	967-317
14	S. JEREB	5-28-93	941-489
15	RT 318 ROSS	8-1-94	929-838
16	M.M. MUHL & B.M. LYNE	2-27-93	954-1115
17	P.A. & R.M. GEITNER	1-12-94	968-7315
18	DEWEY, L.C. & S.K. DEWEY	10-20-93	968-1222
19	E.L. & L. MARCHINI	2-27-93	964-1825
20	COUNTRY VALLEY ESTATES, LTD.	3-18-94	988-397
21	R.R. & C.A. WALBERT	8-21-94	992-929
22	COUNTRY VALLEY ESTATES, LTD.	2-1-95	1007-128
23	COUNTRY VALLEY ESTATES, LTD.	2-1-95	1007-128
24	V.J. GIBALDI	12-8-93	1008-912
25	E.S. & K. KUBIK	2-28-94	978-318
26	MICHAEL BROS. PARTNERSHIP	12-10-93	968-1135
27	S.J. & M.E. SARGENT	8-22-94	991-1021
GLEN VALLEY FARMS #2 VOL 21 - P. 116 & 117			
28			
29			
30			
31			
32			
33			
34			
35			
36			
37			
38			
39			
40			
41			
42			
43			
44			
45			
46			
47	DAMON HOMES, INC.	12-18-94	1003-432
48			

TWP-RED
 1-800-349-7334
 SCALE IN 1/8" OF AN INCH

326

PAGE 25

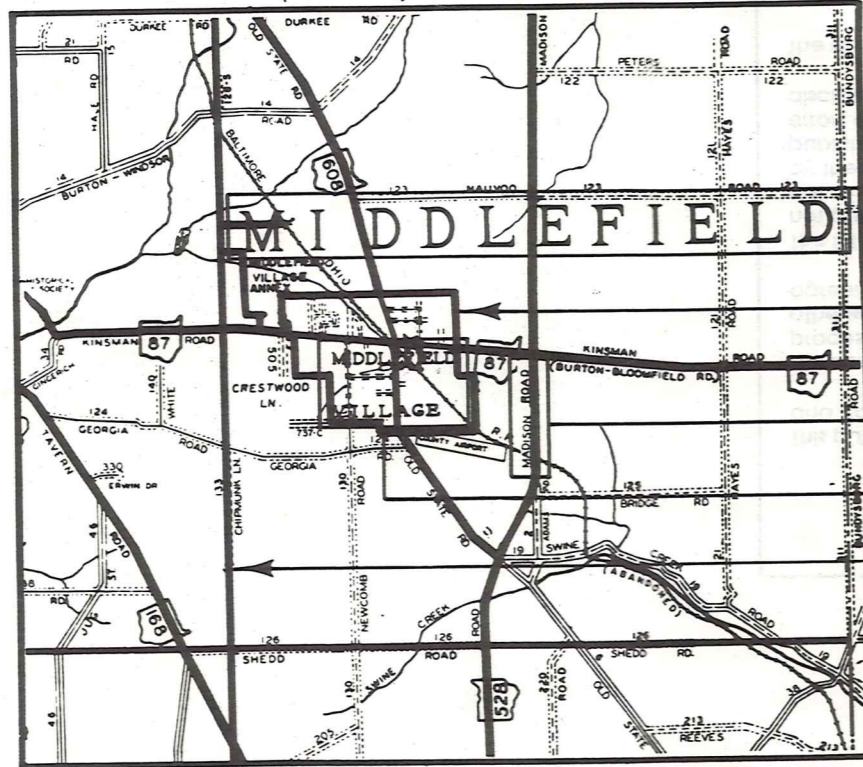
129.0226 AC
 ORDINANCE 91-150
 MID. ANNEXED 12-24-91

SCALE 1" = 200'
 JAN. 1, 1995

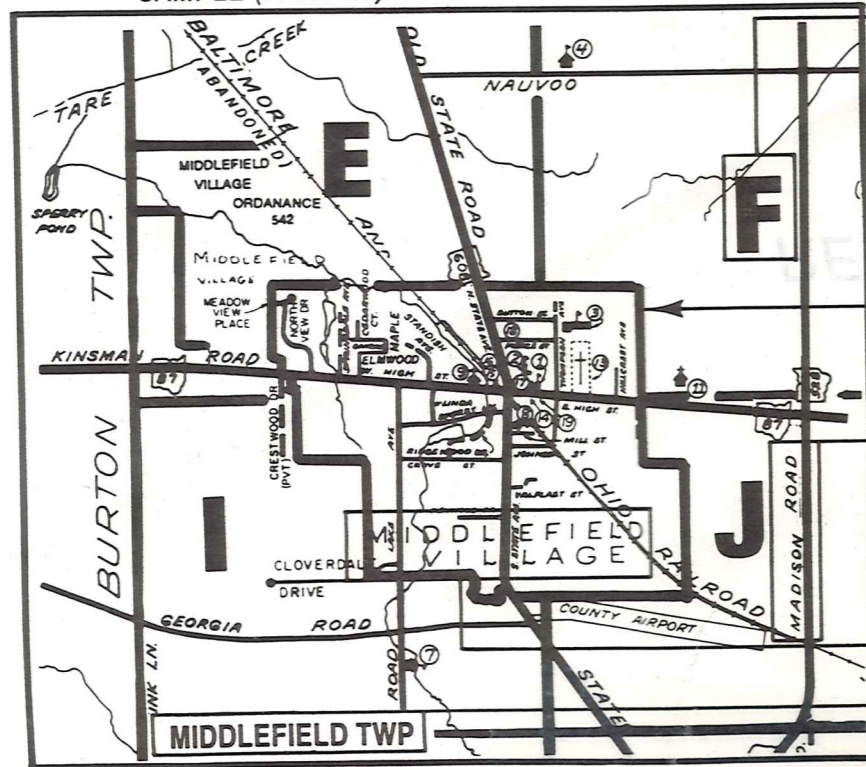
Explanation and Use Sheet for Geauga County, Ohio

A

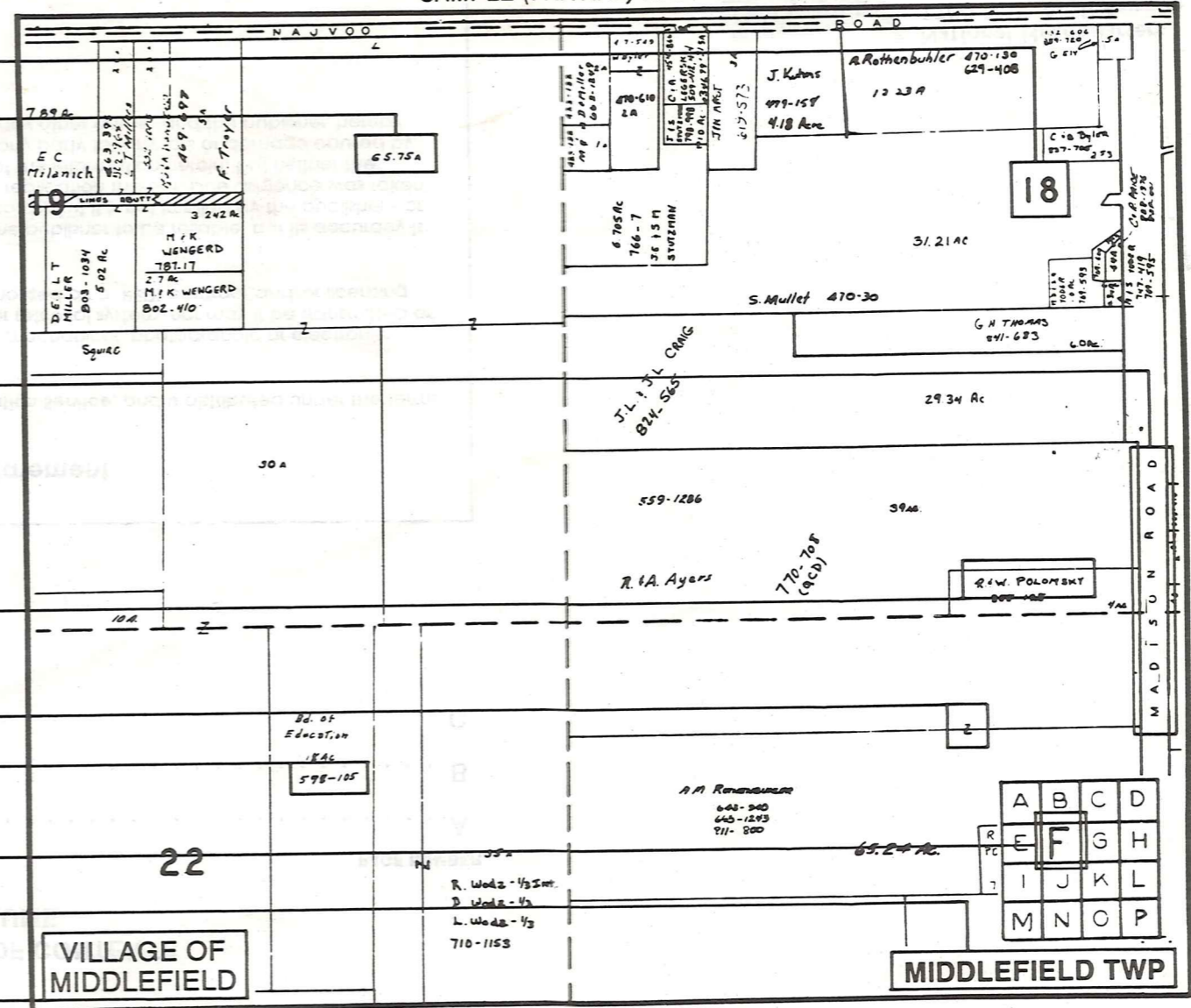
SAMPLE (PARTIAL) COUNTY INDEX MAP



SAMPLE (PARTIAL) MUNICIPALITY INDEX MAP



SAMPLE (PARTIAL) MAP PAGE



- Tract Lot Number
- Acreage
- Township Name
- Village Boundary
- Street Name
- Village Name
- Township Boundary
- Owners Name
- Denotes Continuous Ownership
- Deed Book & Page
- Map Page Number
- Township Name
- Village Name

- Village Boundary
- Street Name
- Village Name
- Township Name

USE OF THE MAP VOLUME

1. LOCATE THE GENERAL AREA OF INTEREST ON THE COUNTY INDEX MAP AND NOTE THE MUNICIPALITY NAME (TOWNSHIP OR VILLAGE).
 2. REFER TO THE TABLE OF CONTENTS AND NOTE THE BEGINNING ATLAS PAGE NUMBER FOR THE MUNICIPALITY OF INTEREST.
 3. TURN TO THE PAGE INDICATED, ON THIS PAGE WILL APPEAR AN INDEX MAP FOR THAT MUNICIPALITY.
 4. LOCATE THE GENERAL AREA OF INTEREST AND NOTE THE MAP PAGE NUMBER. THIS MAY BE EITHER A LETTER OR A NUMBER.
 5. MAP PAGES ARE IN ALPHABETICAL (OR NUMERICAL) SEQUENCE FOLLOWING THE MUNICIPALITY INDEX MAP. FOLLOW SEQUENCE TO THE MAP PAGE INDICATED.
 6. LOCATE SPECIFIC PARCEL OF INTEREST AND NOTE THE DESIRED INFORMATION.
- NOTE: ON SOME MAPS YOU MAY BE REFERRED TO A DETAIL SHEET SHOWING AN ENLARGEMENT OF THE AREA. THESE MAPS ARE FOUND AT THE END OF THE REGULAR MAP PAGES IN EACH MUNICIPALITY IN EITHER ALPHABETICAL OR NUMERICAL SEQUENCE.
- NOTE: CHARDON VILLAGE HAS TITLE SHEETS. TO LOCATE OWNERS NAME, NOTE THE PARCEL NUMBER, REFER TO THE TITLE PAGE FOLLOWING THE MAP OF INTEREST, FOLLOW NUMERICAL SEQUENCE TO THE PARCEL NUMBER OF INTEREST AND NOTE THE DESIRED INFORMATION. IN ALL OTHER MUNICIPALITIES THE OWNERS NAME APPEARS ON THE MAP PAGE.